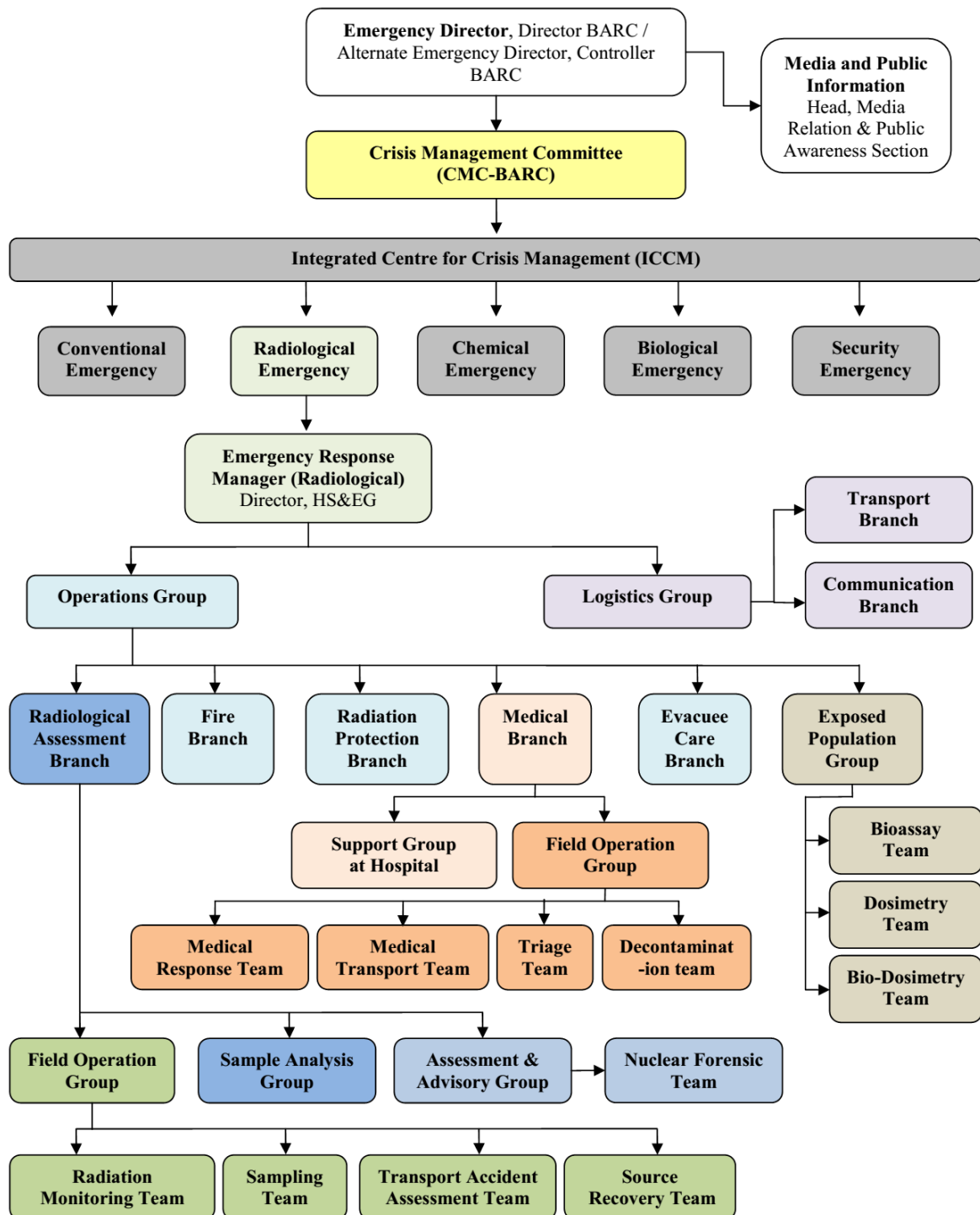
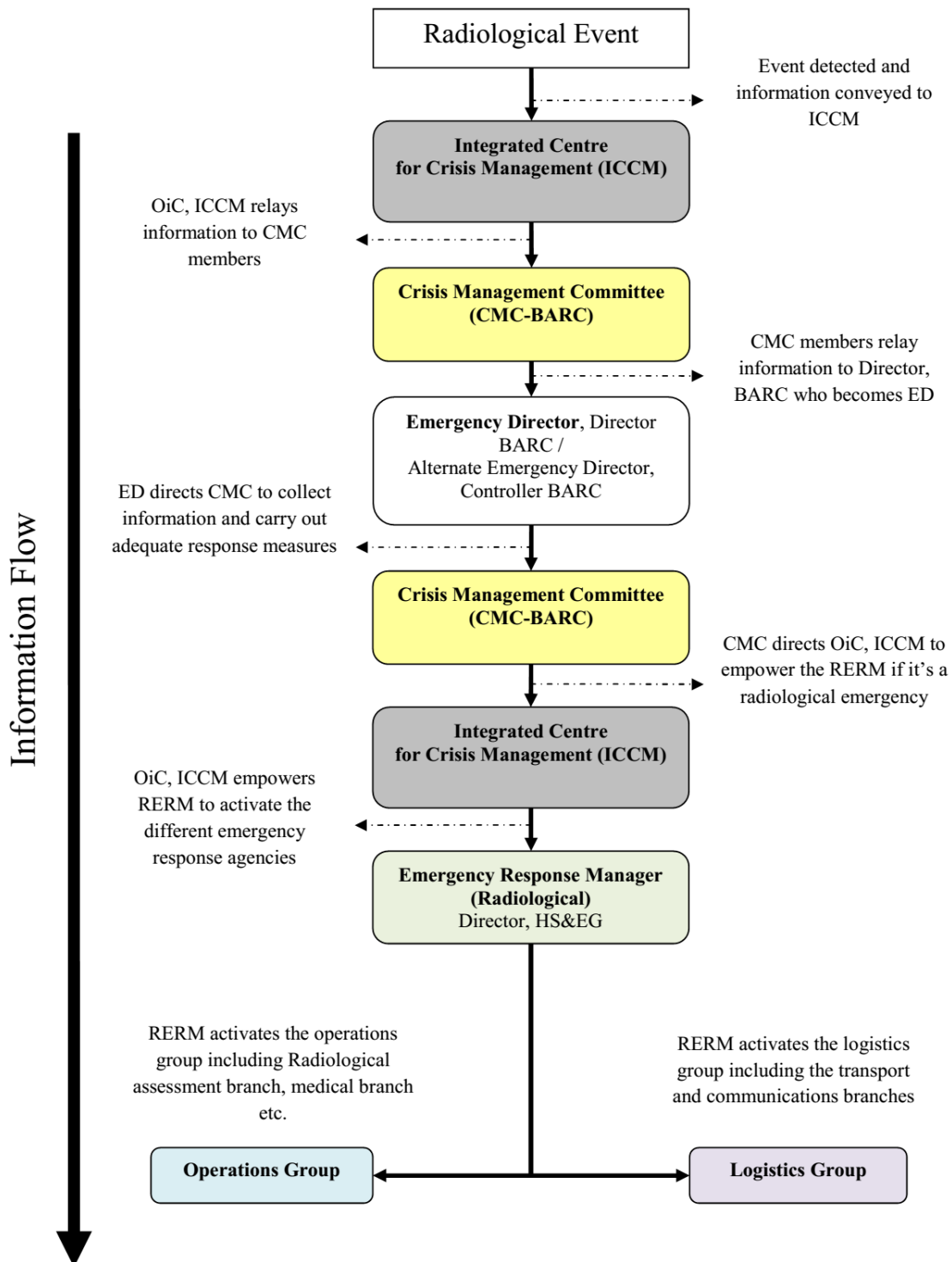


## Response Hierarchy with various response organizations



# Operational Flowchart from the time of detection of event



Emergency preparedness and response programs enable emergency personnel to rapidly identify, evaluate, and react to a wide spectrum of emergencies; including those arising from terrorism or natural events. ICCM integrates the overall capabilities for the response to and recovery from radiological incidents/accident involving facilities, materials and environment of BARC site. ICCM is prepared to respond in case of nuclear and radiological emergencies that could pose radiation exposure and contamination hazard due to incident/accident within the BARC site. Nuclear accident or any other radiological event is the most decisive situation calling for immediate response as they may result in acute exposure to radiation. Apart from the weak probability of nuclear accident inoperating nuclear facilities such as research reactors / reprocessing facilities, few scenarios within the BARC site are also listed below considering radiological threat.

- Conventional emergency leading to radiological emergencies
- Transport accident involving shipment of radioactive material
- Terrorist attack leading to radiological emergency
- Large area radioactive contamination due to insider threat/sabotage
- Fire involving radioactive materials
- Strong radioactive source in open environment